

**ASX Code:** AIV

**Issued Capital**

215,502,577 ordinary shares (AIV)

**Market Capitalisation**

\$1.07M, 11<sup>th</sup> October 2024, \$0.005

**Directors**

Min Yang (Chairman, NED)  
Mark Derriman (Managing Director)  
Geoff Baker (NED)  
Dongmei Ye (NED)  
Andrew Bald (NED)

**About ActivEX**

*ActivEX Limited is at the forefront of mineral exploration, committed to uncovering high-value mineral resources.*

*With a steadfast dedication to sustainability and innovation, ActivEX aims to deliver enduring value for its shareholders and positively impact the communities in which it operates.*

Suite 2, 3B Macquarie Street  
Sydney, NSW 2000

[admin@activex.com.au](mailto:admin@activex.com.au)  
[www.activex.com.au](http://www.activex.com.au)

Phone +61 (02) 9251 9088

ABN 11 113 452 896

**ActivEX Secures REE and Base Metal Tenement in Central Queensland 14<sup>th</sup> October 2024**

ActivEX Limited (ASX: AIV) (“ActivEX” or “the Company”) is pleased to announce that on the 8<sup>th</sup> October 2024 the second of two Exploration Permits for Minerals (EPM) was granted at the Aramac Project (EPM 28645 Ivy Leaf) and doubling the Companies footprint to 633 sq kms. The Company intends to explore for rare earth elements (REE) within the kaolinitic and in part calcareous sediments of the basal Lower Cretaceous Wallumbulla Formation (Doncaster Member) and base metals (Zn/Co) and Mn/Ba in the underlying Upper Jurassic/Lower Cretaceous fine-grained sediments of the Ronlow Beds.

**Key Highlights:**

- **Exploration Permits:** ActivEX lodged two EPM applications (EPMa 28644 & 28645) in Queensland in 2022. EPM28645 has now been granted, enabling the Company to advance its exploration activities at the Aramac Project.
- **Project Overview:** The Aramac Project has two primary targets (**ASX Announcement 20<sup>th</sup> June 2024**):
  - **Kaolinitic Fine-grained sediments of the Wallumbulla Formation with REE Potential:** Recent field work (**ASX Announcement 20<sup>th</sup> June 2024**) has delineated a 55km strike of pale kaolinitic rock exposed as a 3m high scarp above a generally flat sand covered plain (**Figure 2**). Limited surface geochemical rock sampling at the northern end has highlighted the REE potential of this unit. A total of 9 rock samples (L064-68 and L071-074) were collected from the pale stratigraphy with local red limonite coating. **A maximum TREO analysis of 777ppm within adjacent tenement EPM 28644 was obtained with 4 samples being > 250ppm TREO.** The sampling was completed in a very small fraction of the 55km strike (Brown layer in **Figure 2**) have shown some promising assay results for rare earth elements.
  - **Fine-grained sediments of the underlying Ronlow Beds with Base Metal Potential:** As part of the initial exploration 9 samples of outcropping fine-grained sediments underlying the “pale” scarp with black and brown limonite coating from EPM 28644 were submitted to ALS for geochemical analyses(**ASX Announcement 20<sup>th</sup> June 2024**) with some very encouraging results.
    - Zn – 8 samples > 200ppm to a maximum of 706ppm**
    - Co – 2 samples > 200ppm to a maximum of 1,070ppm**
    - Ba – All samples > 100ppm and 3 samples > 0.1% to a maximum of 11.45%**

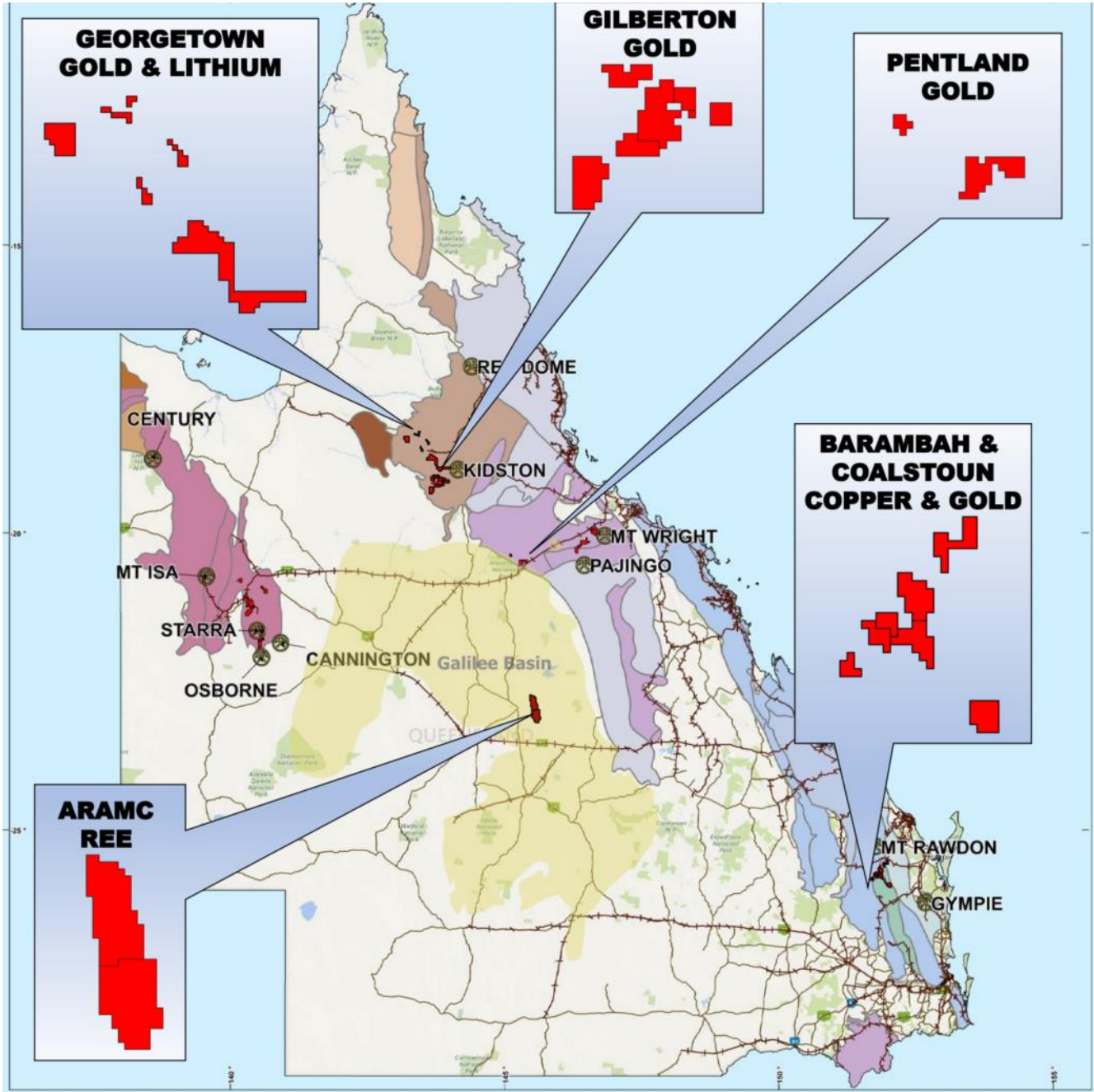
*Exploration Manager Mark Derriman Commented “ This is an exciting development for Activex with the acquisition of the new tenements meaning the exploration target length for REE and Base Metal exploration is now 55km in length defined by a distinctive 2-3m thick scarp feature comprising kaolinitic fine grained sediment and sands.. The TREO analysis of 777ppm with EPM 28644 from only a handful of samples is very encouraging. The adjacent outcropping limonite stained sediments with Co to 1,070ppm and Zn to 706ppm are of interest in that they may be the surface expression of sulphide mineralisation at depth. Historical exploration has only been a handful of shallow Aircore drillholes targeting mineral sands within EPM 28645 with no exploration for REE or Base Metal mineralisation.*

### **2024/2025 Exploration Plans:**

- Desktop study involving review of all historical exploration and geological/regolith studies of satellite imagery to define the target stratigraphy.
- Submission of all required documents to the relevant stakeholders regarding our proposed exploration plans.
- Field-based geological traverses across the contact of the Wallumbilla Formation REE target and the Ronlow Beds Base Metal Target. Along all the geological traverses the Company will collect pXRF readings using our in-house Niton instruments.
- Selected rock samples will be submitted to ALS for a full suite of geochemical analyses.
- The initial phase of exploration will be followed by detailed geological/regolith mapping and soil sampling to define drilling targets.
- Broad-spaced aircore drilling traverses across the Wallumbilla Formation/Ronlow Beds contact to test REE and Base metal targets.

This announcement is authorised by the Board of ActivEX Limited

**For further information contact:  
Mr Mark Derriman, Managing Director**



- Legend
- Town
  - Road
  - Railway

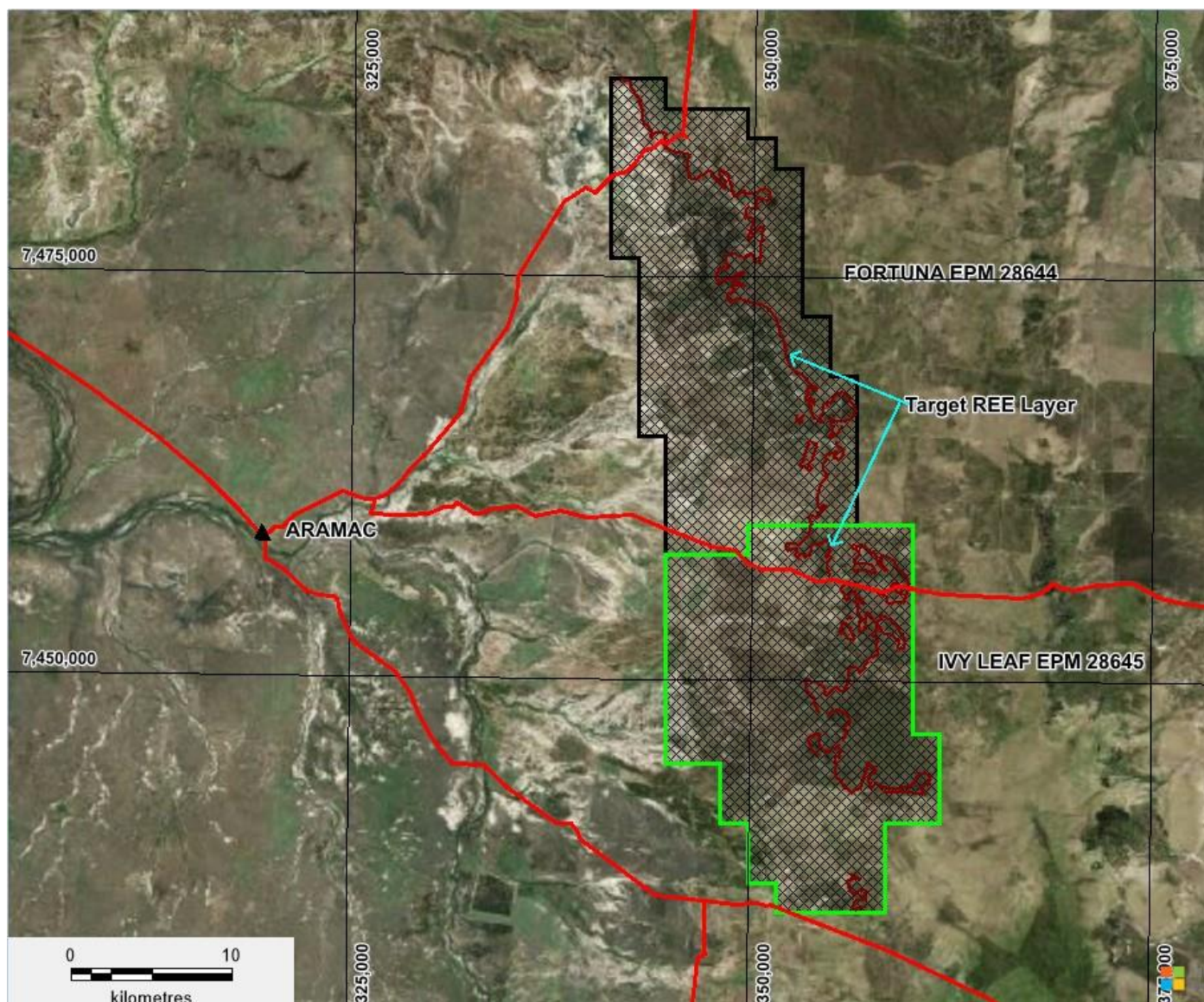
- Tectonic Province
- Savannah / Iron Range Province
  - Murphy / Western / Kalkadoon-Ewen / Eastern Province
  - Hogkinson / Broken River / Clarke River Province
  - Etheridge Province
  - Croydon Province
  - Cape River / Anakie / Thalanga Province
  - New England Orogen

**ACTIVEX QUEENSLAND TENEMENTS**



Figure 1. ActivEX Limited Queensland Projects and tenements





**Figure 2.** ActivEX Project showing the newly granted tenement in green Ivy Leaf EPM 28645 and the target REE layer in brown.

## Declarations under 2012 JORC Code and JORC Tables

The information in this report which relates to Exploration Results is based on information reviewed by Mr. Mark Derriman, who is a member of The Australian Institute of Geoscientists (1566) and Mr. Xusheng Ke, who is a Member of the Australasian Institute of Mining and Metallurgy (310766) and a Member of the Australian Institute of Geoscientists (6297).

Mr. Mark Derriman and Mr. Xusheng Ke have sufficient experience that is relevant to the style of mineralisation and type of deposit under consideration and to the activities which he is undertaking to qualify as a Competent Person as defined in the 2012 Edition of the Australasian Code for Reporting of Exploration Results, Mineral Resources and Ore Reserves.

Mr. Mark Derriman and Mr. Xusheng Ke consent to the inclusion of his name in this report and to the issue of this report in the form and context in which it appears.

## Previous Disclosure - 2012 JORC Code

Information relating to Mineral Resources, Exploration Targets and Exploration Data associated with previous disclosures relating to the Gilberton and Georgetown Gold Project in this report has been extracted from the following ASX Announcements:

- ASX announcement titled "Rare Earth Opportunities in Queensland" dated 26<sup>th</sup> October 2022
- ASX announcement titled "Secures Exciting REE and Base metal Target in Central Qld" dated 20<sup>th</sup> June 2024

Copies of reports are available to view on the ActivEX Limited website [www.activex.com.au](http://www.activex.com.au). These reports were issued in accordance with the 2012 Edition of the JORC Australasian Code for Reporting of Exploration Results, Mineral Resources and Ore Reserves. The Company confirms that it is not aware of any new information or data that materially affects the information included in the original market announcements. The Company confirms that the form and context in which the Competent Person's findings are presented have not been materially modified from the original market announcement.