

ASX Code: AIV

Issued Capital

215,502,577 ordinary shares (AIV)

Market Capitalisation

\$1.72M, 28th January 2025, \$0.008

Directors

Min Yang (Chairman, NED)

Mark Derriman (Managing Director)

Geoff Baker (NED)

Dongmei Ye (NED)

About ActivEX

ActivEX Limited is at the forefront of mineral exploration, committed to uncovering high-value mineral resources.

With a steadfast dedication to sustainability and innovation, ActivEX aims to deliver enduring value for its shareholders and positively impact the communities in which it operates.

Suite 2, 3B Macquarie Street
Sydney, NSW 2000

admin@activex.com.au

www.activex.com.au

Phone +61 (02) 9251 9088

ABN 11 113 452 896

ActivEX Secures REE Tenement in Central Queensland

ActivEX Limited (ASX: AIV) (“ActivEX” or “the Company”) is pleased to announce that on the 17th of December 2024 the Queensland Department of Natural Resources and Mines, Manufacturing, and Regional and Rural Development acknowledged our application for an Exploration Permit which was given the number EPM 29159. The Tenement Application is named “Doonkuna” and comprises 95 sub blocks and is located approximately 250km SW of the town of Gladstone. The Company intends to explore for rare earth elements (REE) associated with the ferruginous sediments of the Westgrove Ironstone member.

Key Highlights:

- **Exploration Permits:** In 2024, ActivEX lodged an application for an Exploration Permit for Minerals in Central Queensland. The application has since been accepted, and the tenement has been officially named Doonkuna (EPM 29159).
- **Project Overview:** The Doonkuna Project comprises a high-priority geological target: the Westgrove Ironstone Member. This Early Triassic ferruginous sedimentary rock unit exhibits substantial potential for rare earth element (REE) mineralisation. The project's strategic emphasis on this formation highlights its significance as a key exploration opportunity within the broader context of REE resource development.

The Westgrove Ironstone Member predominantly consists of:

- Ferruginous sandstones and siltstones with high iron content, resulting from chemical precipitation and weathering processes.
- Laminated iron-rich horizons, often interbedded with claystones or mudstones.
- Hematite, goethite, and other iron oxides commonly form the primary matrix.

The Westgrove Ironstone Member, with its ferruginous nature, may have concentrated REEs through:

- Secondary enrichment during lateritic weathering in tropical to subtropical climates.
- Hydrothermal processes introducing REE-bearing fluids along fractures and faults.
Potential REE-hosting minerals in the unit:
 - **Monazite** (rich in light REEs such as cerium and lanthanum).
 - **Xenotime** (rich in heavy REEs such as yttrium, dysprosium, and terbium).
 - **Bastnäsite** or other carbonate REE minerals.

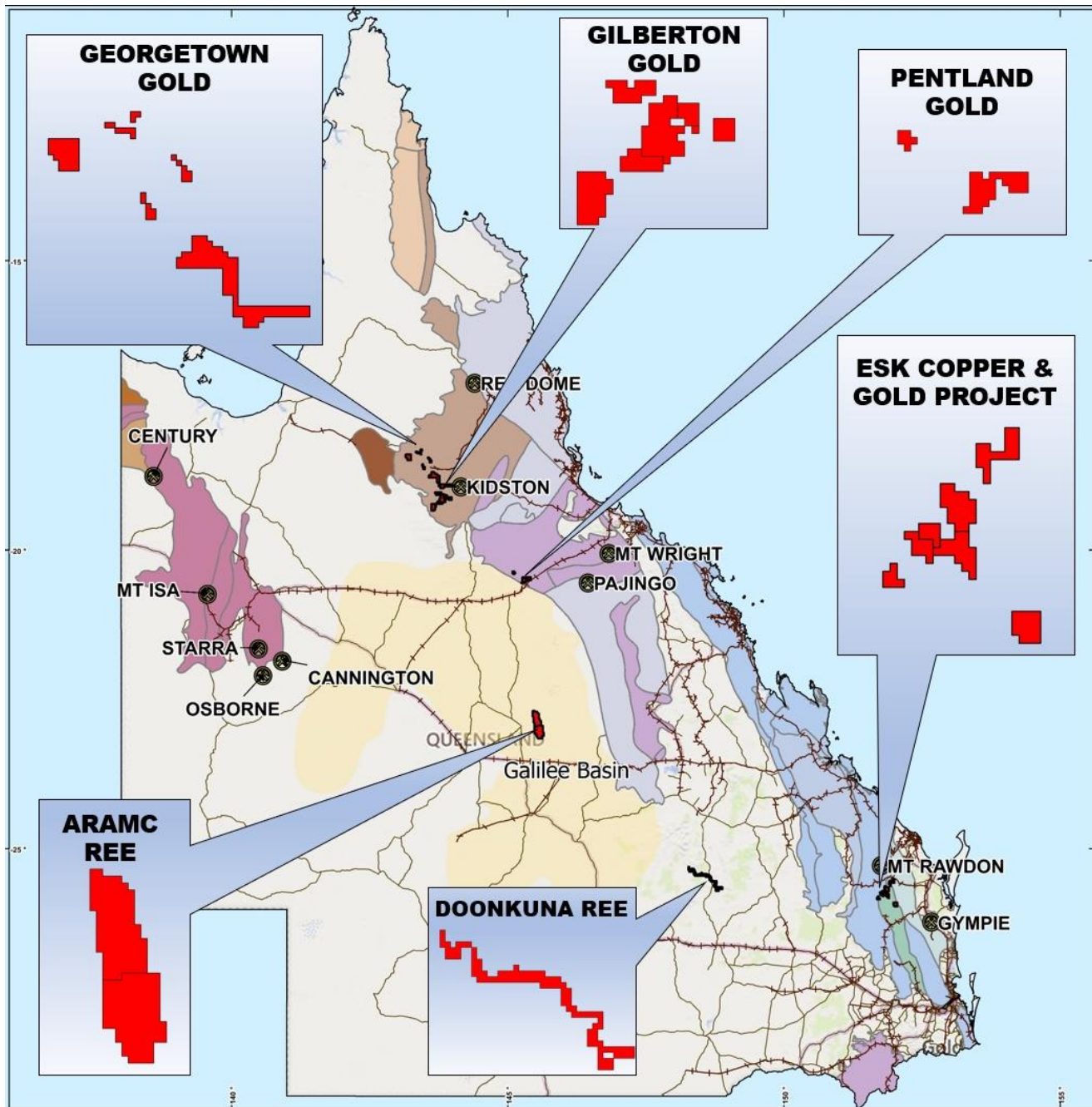
Managing Director Mark Derriman Commented “This adds further excitement to our growing portfolio of QLD REE projects in areas with no prior REE Exploration. The Company has been reviewing REE projects and several in WA are associated with “ironstones”. Hastings Technologies (ASX Announcement 6th February 2024) increased its JORC REE Resource to 29.93Mt @ 0.93% TREO of which 30% comprises the valuable elements Neodymium and Prasodymium. The Yagibana Project in WA “hosts numerous near surface iron oxide occurrences which consist of iron oxides and hydroxides”. Individual linear fault-related ironstones extend for several kilometers. Northern Minerals is advancing the Wolverine Deposit (ASX Announcement 10th October 2022) comprising a JORC Resources of 6.44Mt @ 0.96% TREO. Hosted by the Browns Range Metamorphics with hematite and sericite alteration associated with a hydrothermal breccia”.

2025 Exploration Plans:

- Desktop study involving review of all historical exploration and geological/regolith studies of satellite imagery to define the target stratigraphy.
- Submission of all required documents to the relevant stakeholders regarding our proposed exploration plans.
- Field-based geological traverses across the Westgrove Ironstone Member using the Companies Niton pXRF backed up with selected samples being sent to ALS for the full REE suite of elements.
- The initial phase of exploration will be followed by detailed geological/regolith mapping and soil sampling to define drilling targets.
- Broad-spaced aircore drilling traverses across the Westgrove Ironstone Member test REE targets.

This announcement is authorised by the Board of ActivEX Limited

**For further information contact:
Mr Mark Derriman, Managing Director**



- Legend
- Town
 - Road
 - Railway

- Tectonic Province
- Savannah / Iron Range Province
 - Murphy / Western / Kalkadoon-Ewen / Eastern Province
 - Hogkinson / Broken River / Clarke River Province
 - Etheridge Province
 - Croydon Province
 - Cape River / Anakie / Thalanga Province
 - New England Orogen

ACTIVEX
QUEENSLAND TENEMENTS

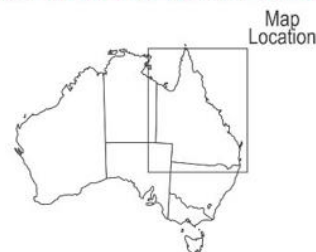


Figure 1. ActivEX Limited Queensland Projects and tenements

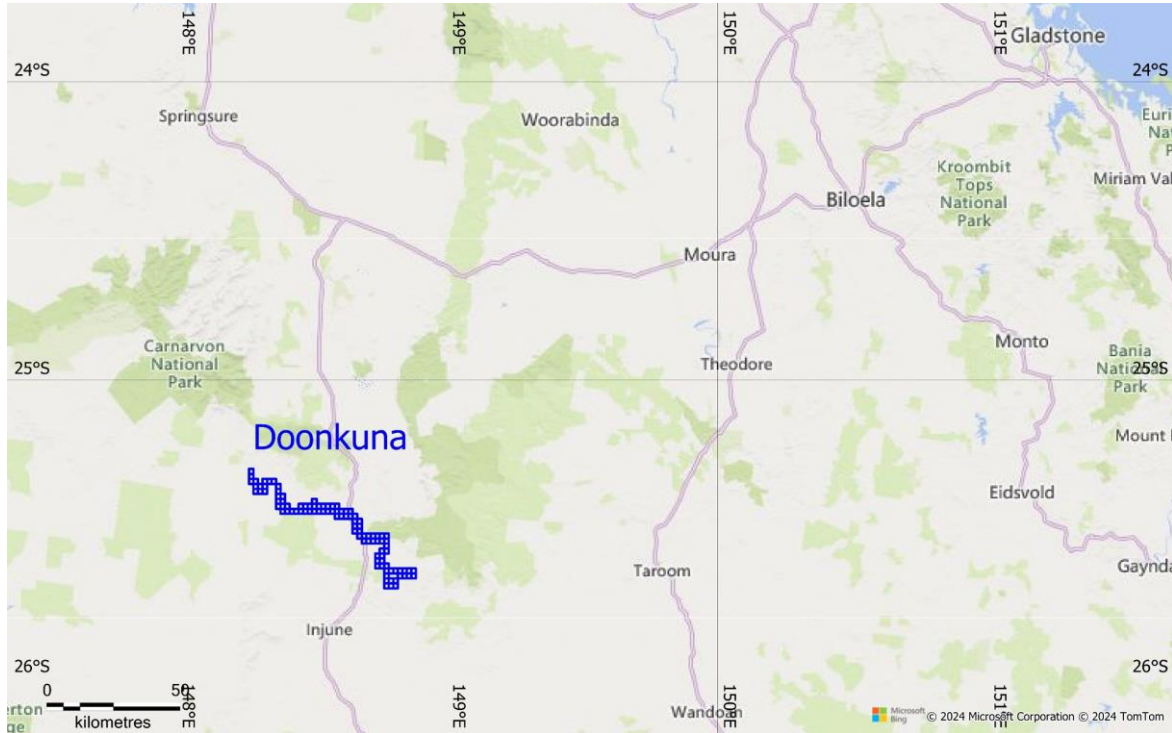


Figure 2. ActivEX Doonkuna Project Regional Location

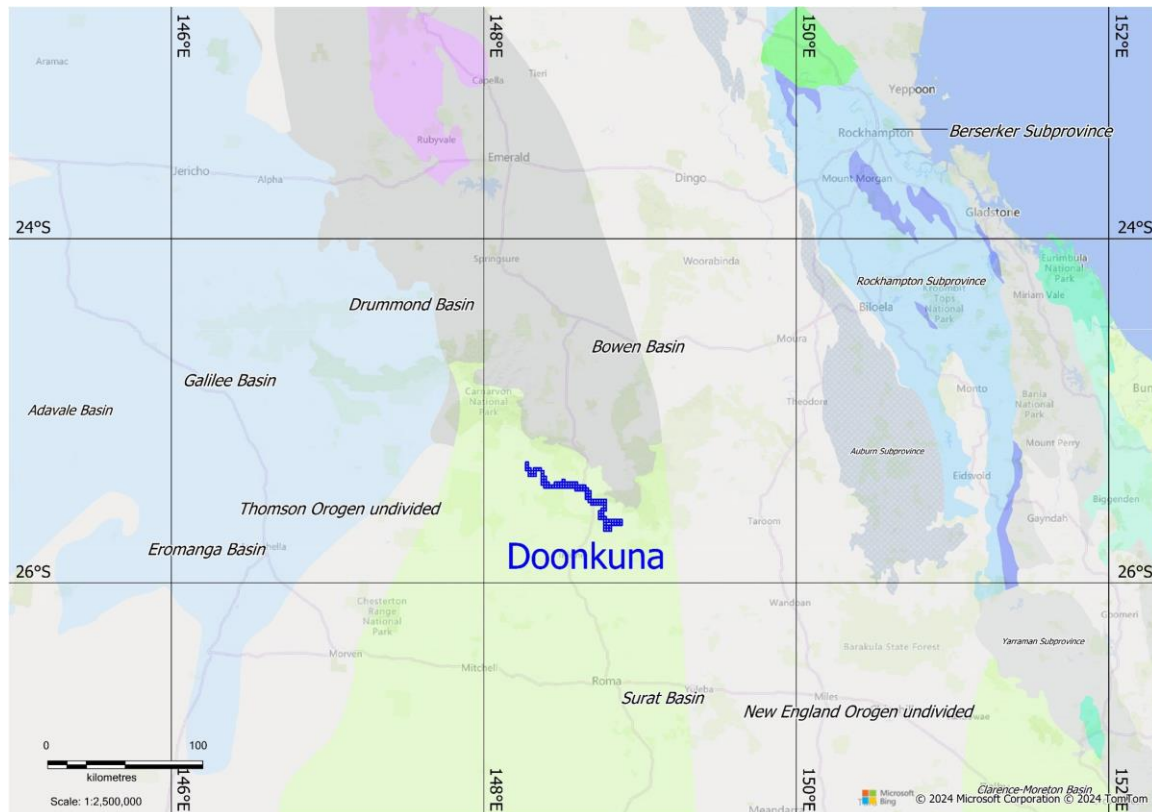


Figure 3. ActivEX Doonkuna Regional Geological Setting – Surat Basin adjacent to the Bowen Basin

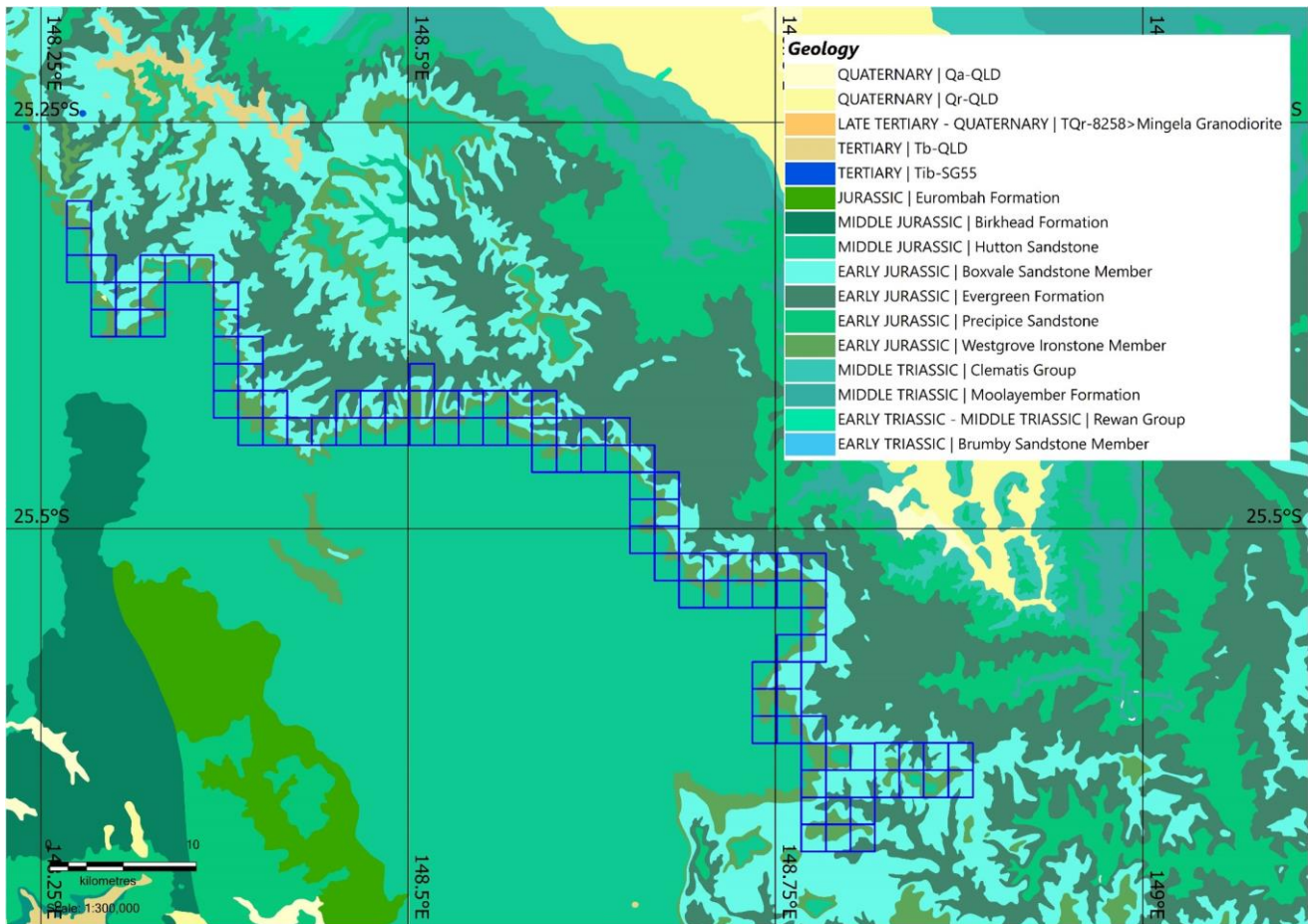


Figure 4. ActivEX Doonkuna Local Geological Setting – Note the tenement application is targeting the Westgrove Ironstone Member