

ASX Code: AIV

**Issued Capital**

215,502,577 ordinary shares (AIV)

**Market Capitalisation**

\$1.293M, 12<sup>th</sup> May 2025, \$0.006

**Directors**

Min Yang (Chairman, NED)

Mark Derriman (Managing Director)

Geoff Baker (NED)

Dongmei Ye (NED)

**About ActivEX**

*ActivEX Limited is at the forefront of mineral exploration, committed to uncovering high-value mineral resources.*

*With a steadfast dedication to sustainability and innovation, ActivEX aims to deliver enduring value for its shareholders and positively impact the communities in which it operates.*

Suite 2, 3B Macquarie Street  
Sydney, NSW 2000

[admin@activex.com.au](mailto:admin@activex.com.au)

[www.activex.com.au](http://www.activex.com.au)

Phone +61 (02) 9251 9088

ABN 11 113 452 896

**ActivEX Secures Further REE Tenements in Central Queensland**

ActivEX Limited (ASX: AIV) ("ActivEX" or "the Company") is pleased to announce that on the 6<sup>th</sup> May 2025 the Queensland Department of Natural Resources and Mines, Manufacturing, and Regional and Rural Development accepted our tenement applications for Exploration Permits EPMs 29220 Warrong and 29221 Maranoa for a total area of 512km<sup>2</sup> which combined with the initial Doonkuna Application (EPM 29159) of 308km<sup>2</sup> results in a combined area of 820km<sup>2</sup>. The project has been named Westgrove after the Company's REE exploration target – Westgrove Ironstone member. The project is located 500km NW of Brisbane and 50km north of Injune (**Figure 2**).

**Key Highlights:**

- **Exploration Permits:** In 2024, ActivEX lodged an application for an Exploration Permit for Minerals in Central Queensland. The application has since been accepted, and the tenement has been officially named Doonkuna (EPM 29159).
- **Project Overview:** The Doonkuna Project comprises a high-priority geological target: the Westgrove Ironstone Member. This Early Triassic ferruginous sedimentary rock unit exhibits substantial potential for rare earth element (REE) mineralisation. The project's strategic emphasis on this formation highlights its significance as a key exploration opportunity within the broader context of REE resource development.

The Westgrove Ironstone Member predominantly consists of:

- Ferruginous sandstones and siltstones with high iron content, resulting from chemical precipitation and weathering processes.
- Laminated oolitic iron-rich horizons, often interbedded with claystones or mudstones.
- Hematite, goethite, siderite and other iron oxides commonly form the primary matrix.
- Located in the upper Evergreen Formation (Agillaceous Sandstone) below the Hutton Sandstone and above the Precipise.

The Westgrove Ironstone Member, with its ferruginous nature, may have concentrated REEs through:

- Secondary enrichment during lateritic weathering in tropical to subtropical climates.
  - Hydrothermal processes introducing REE-bearing fluids along fractures and faults.
- Potential REE-hosting minerals in the unit:
- **Monazite** (rich in light REEs such as cerium and lanthanum).
  - **Xenotime** (rich in heavy REEs such as yttrium, dysprosium, and terbium).
  - **Bastnäsite** or other carbonate REE minerals.

*Managing Director Mark Derriman commented “This adds further excitement to our growing portfolio of QLD REE projects in areas with no prior REE Exploration and a total footprint of 820km<sup>2</sup>. The Company has been reviewing REE projects and several in WA are associated with “ironstones”. Hastings Technologies (ASX Announcement 14<sup>th</sup> March 2025 Half Yearly Results) JORC REE Resource 29.93Mt @ 0.93% TREO of which 30% comprises the valuable elements Neodymium and Prasodymium. The Yagibana Project in WA “hosts numerous near surface iron oxide occurrences which consist of iron oxides and hydroxides”. Individual linear fault-related ironstones extend for several kilometers. Northern Minerals is advancing the Wolverine Deposit (ASX Announcement 10<sup>th</sup> October 2022) comprising a JORC Resources of 6.44Mt @ 0.96% TREO. Hosted by the Browns Range Metamorphics with hematite and sericite alteration associated with a hydrothermal breccia”.*

### **2025 Exploration Plans:**

- Desktop study involving review of all historical exploration and geological/regolith studies of satellite imagery to define the target stratigraphy.
- Submission of all required documents to the relevant stakeholders regarding our proposed exploration plans.
- Field-based geological traverses across the Westgrove Ironstone Member using the Companies Niton pXRF backed up with selected samples being sent to ALS for the full REE suite of elements.
- The initial phase of exploration will be followed by detailed geological/regolith mapping and soil sampling to define drilling targets.
- Broad-spaced aircore drilling traverses across the Westgrove Ironstone Member test REE targets.

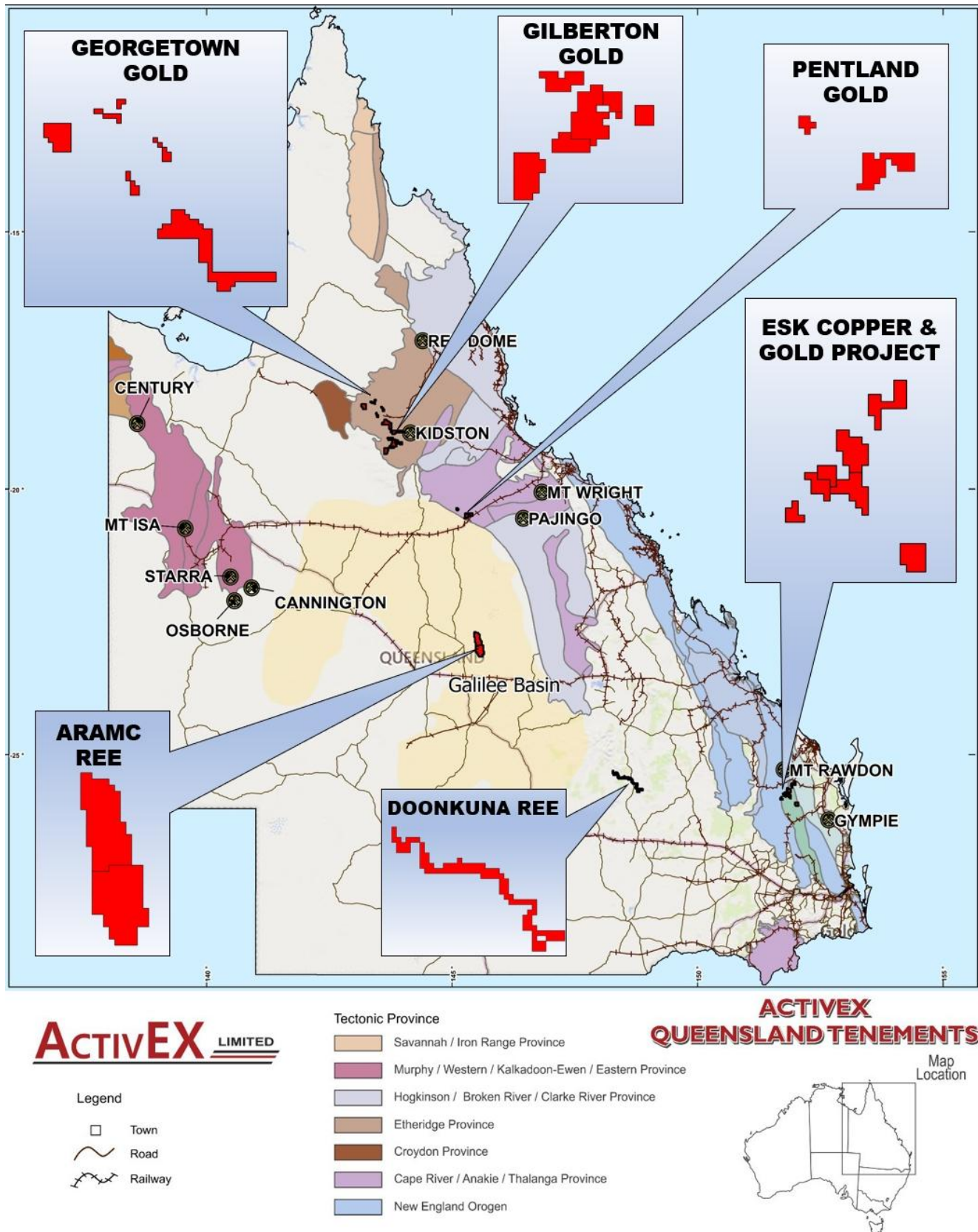


Figure 1. ActivEX Limited Queensland Projects and tenements



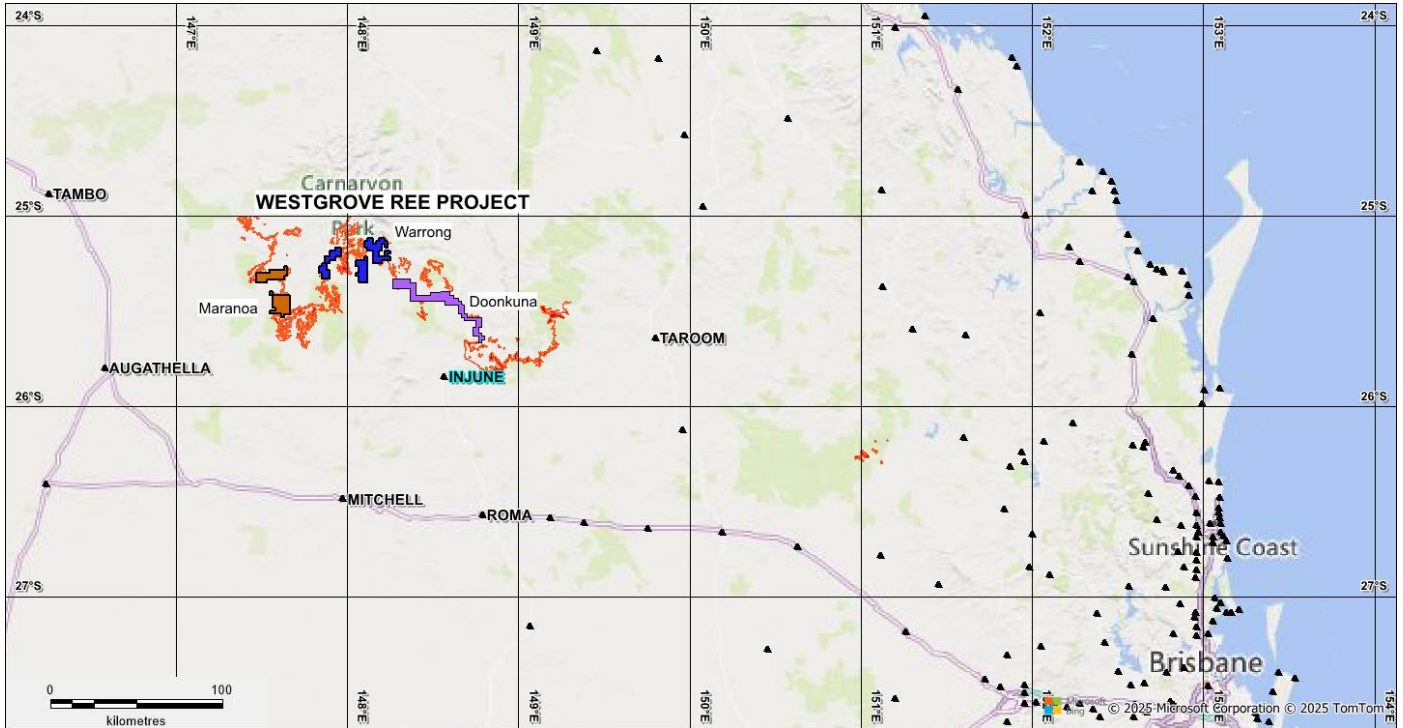


Figure 2. ActivEX Doonkuna Project Regional Location

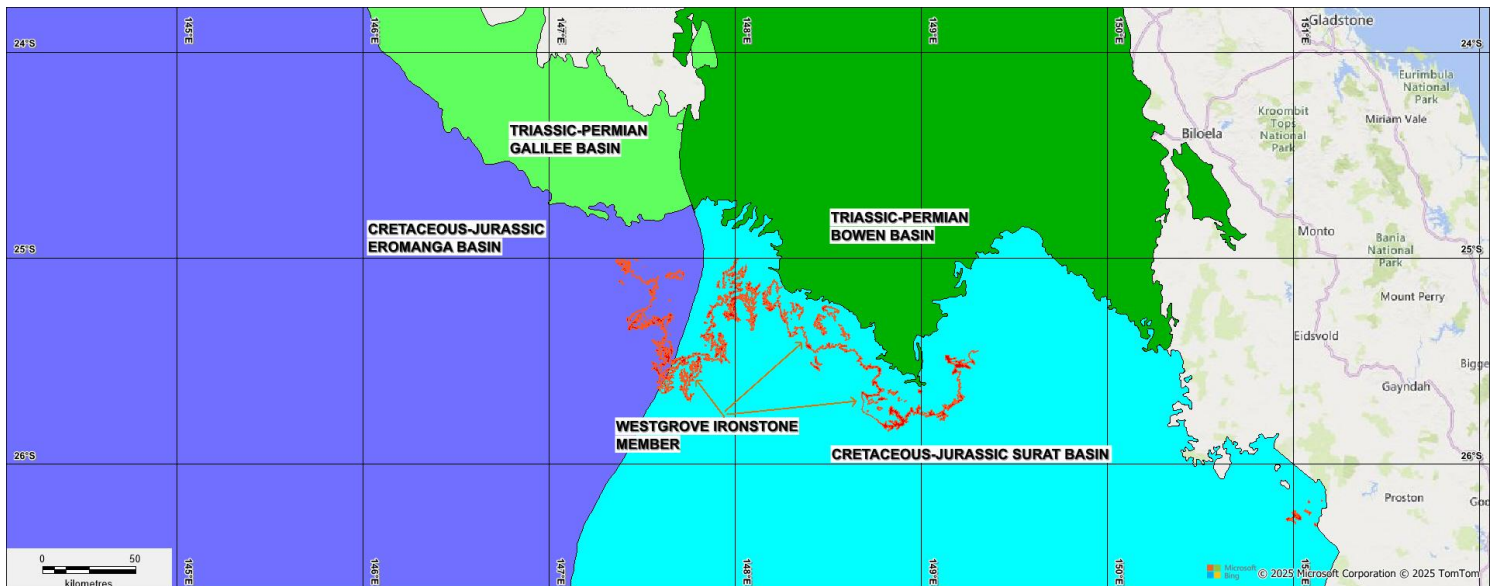


Figure 3. Westgrove Project targeting the Westgrove Ironstone Member at the northern margin of the Cretaceous/Jurassic Surat Basin to a lesser extent the Eromanga Basins

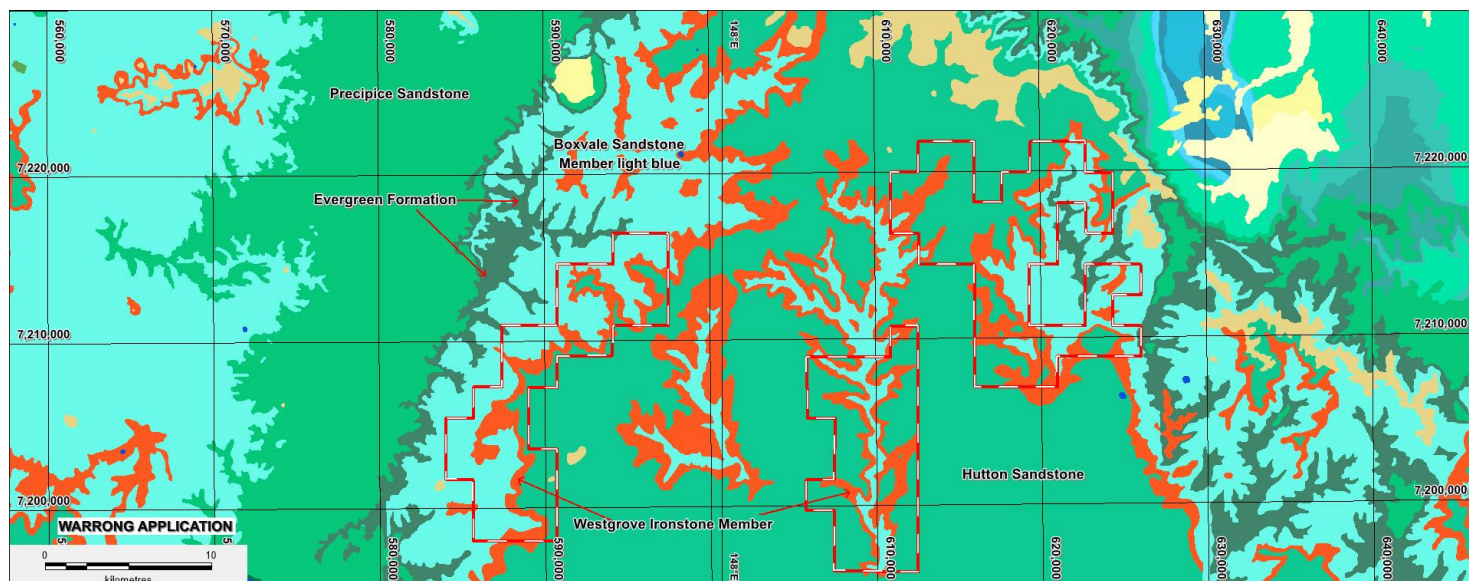


Figure 4. ActivEX Warrong Application Geological Setting –Targeting the Westgrove Ironstone Member (brown)

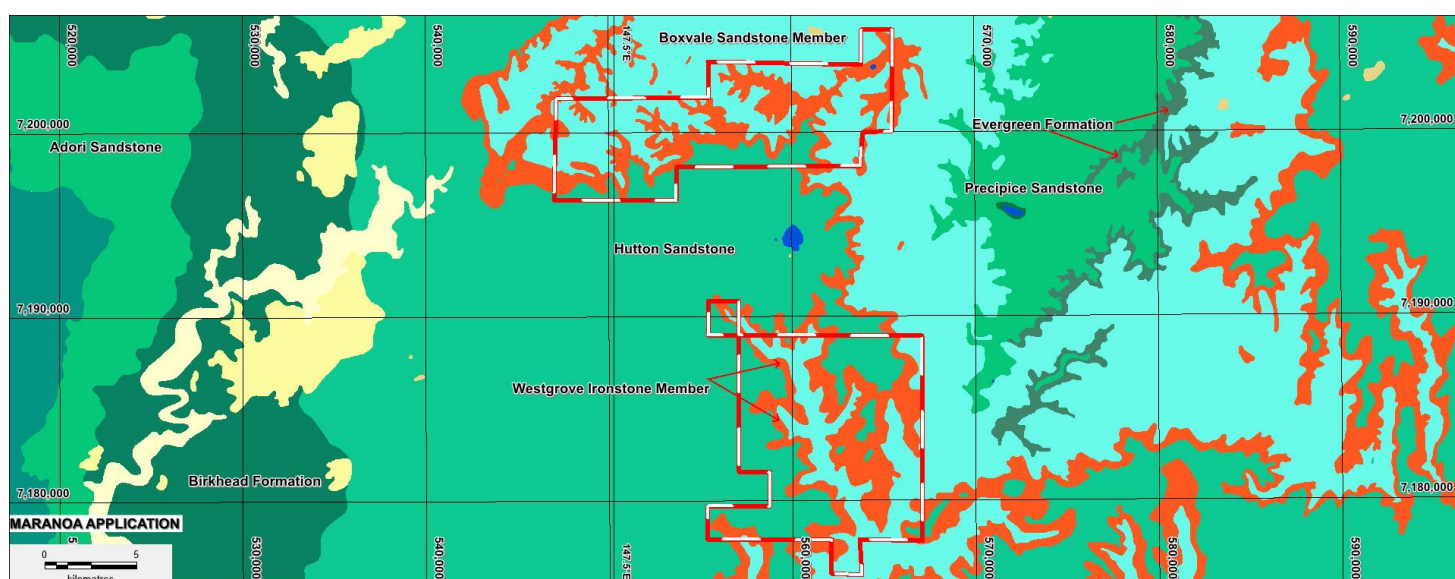


Figure 5. ActivEX Maranoa Application Geological Setting –Targeting the Westgrove Ironstone Member (brown)



## **Appendix 1**

### **Declarations under 2012 JORC Code and JORC Tables**

The information in this report which relates to Exploration Results is based on information reviewed by Mr. Mark Derriman, who is a member of The Australian Institute of Geoscientists (1566) and Mr. Xusheng Ke, who is a Member of the Australasian Institute of Mining and Metallurgy (310766) and a Member of the Australian Institute of Geoscientists (6297).

Mr. Mark Derriman and Mr. Xusheng Ke have sufficient experience that is relevant to the style of mineralisation and type of deposit under consideration and to the activities which he is undertaking to qualify as a Competent Person as defined in the 2012 Edition of the Australasian Code for Reporting of Exploration Results, Mineral Resources and Ore Reserves.

Mr. Mark Derriman and Mr. Xusheng Ke consent to the inclusion of their names in this report and to the issue of this report in the form and context in which it appears.

### **Previous Disclosure - 2012 JORC Code**

Information relating to Mineral Resources, Exploration Targets and Exploration Data associated with previous disclosures relating to the Westgrove REE Project in this report has been extracted from the following ASX Announcement:

- ASX announcement titled "ActivEX Secures REE Tenement in Central Queensland".

Copies of reports are available to view on the ActivEX Limited website [www.activex.com.au](http://www.activex.com.au). These reports were issued in accordance with the 2012 Edition of the JORC Australasian Code for Reporting of Exploration Results, Mineral Resources and Ore Reserves. The Company confirms that it is not aware of any new information or data that materially affects the information included in the original market announcements. The Company confirms that the form and context in which the Competent Person's findings are presented have not been materially modified from the original market announcement.

**This announcement is authorised by the Board of ActivEX Limited**

**For further information contact:**

**Mr Mark Derriman, Managing Director**